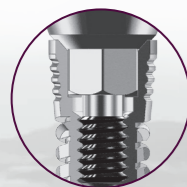
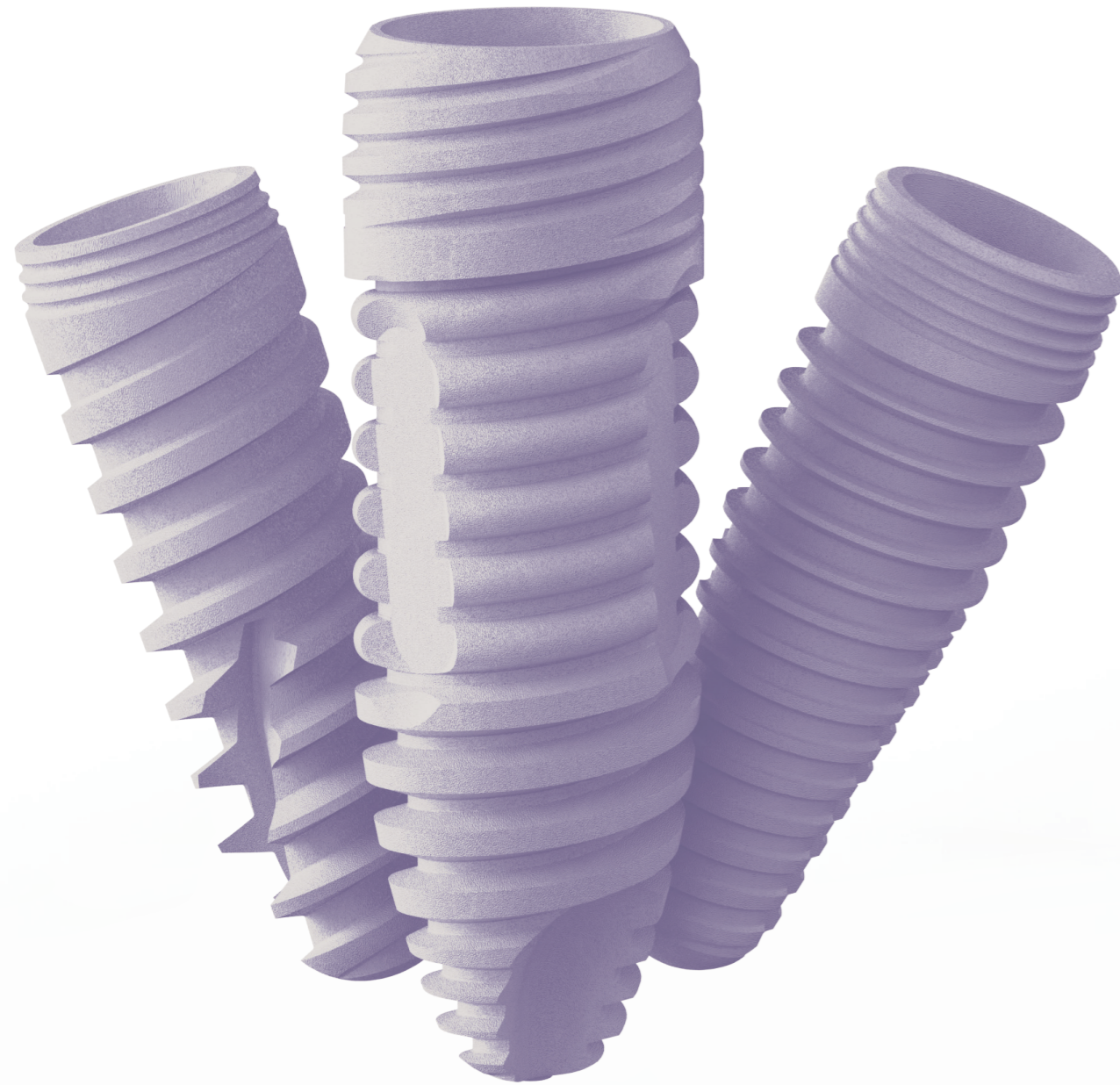


Founded in 2012, SpiralTech was created to fill a void in the world of dental implants by providing simplified treatment; paired with the best technologies and service. We strive to provide innovative designs, along with the necessary education and service, to doctors of all experience levels. Ultimately, we desire to enhance the doctor and patient experience. The ESi Implant product line is the first step in what we see as a continuous journey towards clinical excellence.



OVERVIEW AND PRODUCT SHOWCASE

A SELECTION OF OUR MOST POPULAR PRODUCTS



HEX CONNECTION

THREE IMPLANTS
TWO CONNECTIONS
ONE SOURCE



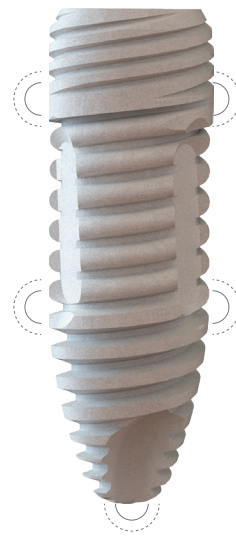
CONICAL HEX CONNECTION

SpiralTech

875 N MICHIGAN AVE. | SUITE 3100
CHICAGO, IL, 60611

312.440.7777
INFO@SPIRALTECH.COM

ENGINEERED BY
DENTISTS - FOR DENTISTS



ESi

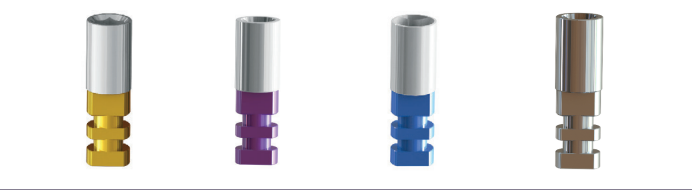
Why ESi?

- Five points for outstanding & immediate primary stability
- Internal stress-reduction and bone growth zones, or fossa
- Platform switching design
- Crestal micro-grooves for enhanced bone retention
- Self-tapping, knife-edged apical threads for implant penetration
- A blend of aggressive and passive implant systems

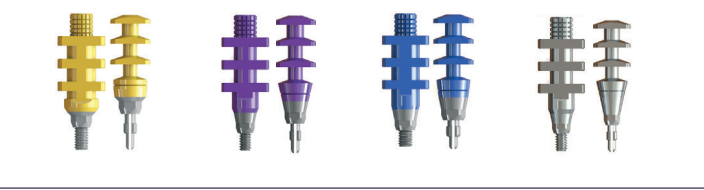
ABUTMENTS



LAB ANALOGS



IMPRESSION TRANSFERS



MULTI-UNIT ABUTMENTS

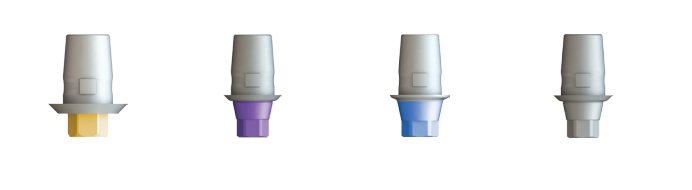


HEALING ABUTMENTS

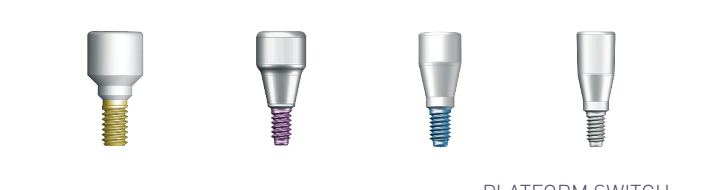


NON-PLATFORM SWITCH

TI-BASE ABUTMENTS



HEALING ABUTMENTS

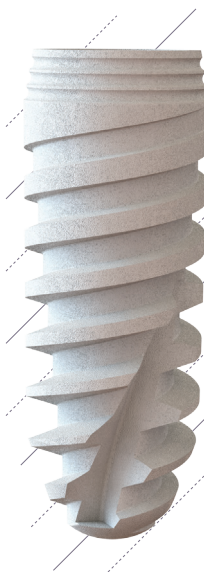


PLATFORM SWITCH

SCANBODIES



*UCLA ABUTMENTS AVAILABLE



Ultimate Implant

Why Ultimate?

- Designed for initial stability, even in soft bone
- A suitable implant for immediate placement
- Can be adjusted to reposition implant during the surgery
- Suitable for type II, III and IV bone
- Recommended for maxillary posterior area, especially below sinus

FULL & MINI SURGICAL KIT



DRILL STOPPERS



BONE EXPANSION KIT



SINUS LIFT KIT



1000 SERIES IMPLANT MOTOR



PENGUIN RFA



KI-20 IMPLANT MOTOR

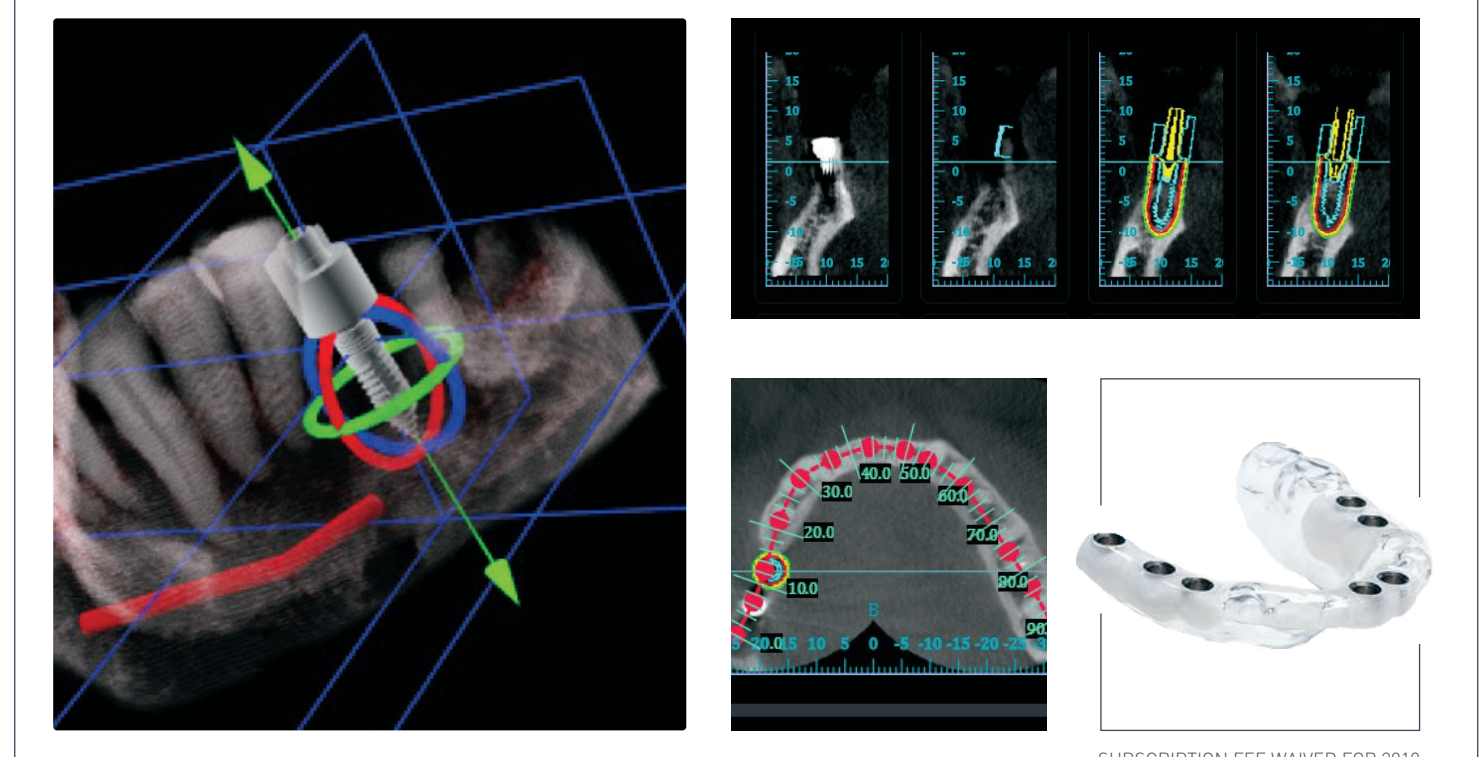


BONE ALLOGRAFT



AVAILABLE IN CHIP OR POWDER FORM

IPS SOFTWARE // COMING SOON



SUBSCRIPTION FEE WAIVED FOR 2019