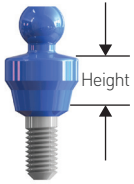


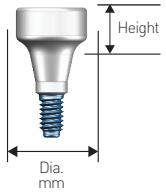
Impression Transfer

Available for both open-tray and closed-tray technique.



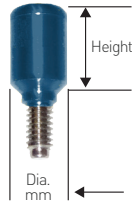
Ball Attachments

Conical and Hex Connection manufactured in Titanium Alloy.



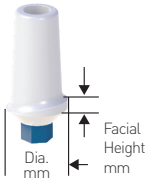
Healing Abutment

Available in various heights and diameters.



Implant Prosthetic Indicator

Conical and Hex Connection manufactured in Titanium Alloy.



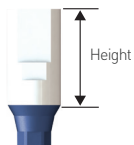
Cement-Retained Abutments

Anatomic Zirconia with Titanium Base Abutments with Conical or Conical Hex Connections.



Ti-Base

For custom crowns, available in all connection types



Scanbodies

For modern CAD/CAM solutions available in all connection types

PROSTHETICS & ABUTMENTS

ENGINEERED SOLUTIONS FOR EVERY CASE



HQ 875 N MICHIGAN AVE. | SUITE 3100
CHICAGO, ILLINOIS, UNITED STATES 60611

CA 2425 MATHESON BOULEVARD E. | SUITE 821
MISSISSAUGA, ONTARIO, CANADA L4W 5K4

DE BOCKWINKEL 12, STADTLOHN
NORTH RHINE-WESTPHALIA, GERMANY 48703

TR KARTALTEPE, LIMON ÇIÇEGI SK. NO:10,
ISTANBUL, TURKEY 34145

INFO@SPIRALTECH.COM | 312.440.7777



ENGINEERED BY
DENTISTS - FOR DENTISTS

Prosthetic Instructions for Implant Abutment

The following are instructions for usage of straight or angulated abutment.

1. Remove the portion of the gingival (gum) which is above the implant covering screw, measure tissue height from the implant crest and accordingly select the proper marginal shoulder height of the abutment.
2. Select healing cap according to the height and preferred width of the healing abutment after evaluating tissue height.

Caution: Make sure healing abutment is at least 2mm above gingival to avoid tissue regeneration above healing cap.

3. Following tissue recovery, evaluate the angulation of the implant in relation to the adjacent teeth as well as the occlusal plane. This will lead you to select the proper abutment from the SpiralTech catalog. (Fig. 1: Straight, 15° or 25°.)
4. In order to stabilize the abutment, a minimal height of 2mm above the mucosa margin of the healing abutment must be made (Fig. 2). Cemented esthetic margin is recommended to be at least 1mm below mucosa.
5. Place the healing abutment in the implant (Fig. 3).

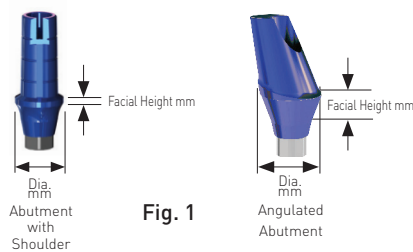
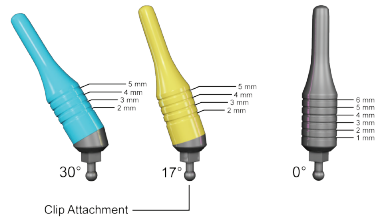


Fig. 1



Fig. 2

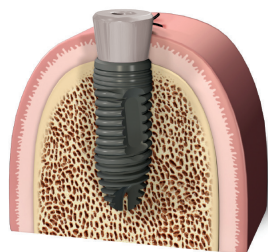
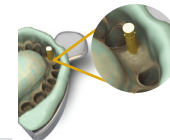
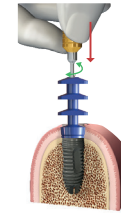


Fig. 3

Prosthetic Instructions for Impression Tray

CLOSED TRAY TECHNIQUE

1. Remove the healing cap and place hand screwdriver into impression transfer and insert it into implant. (make sure to apply clockwise & counter-clockwise movements while applying vertical force to confirm full engagement of implant to transfer)
2. Take a radiograph and confirm no open spaces between implant and transfer.
3. Select impression tray and fill it with impression material as well as hand syringe, apply hand syringe material into wings of the transfer as well as placement of the impression tray onto proper position of dental arch.
4. After impression is set snap impression out and place lab analog.
5. Place and confirm that lab analog is fully engaged to impression transfer. (CAUTION: if lab analog is not engaged you will have an occlusal discrepancy as well as multi-unit discrepancy of open margin.)



OPEN TRAY TECHNIQUE

1. Remove healing cap and place Open impression tray into implant, make sure transfer screw is tight.
2. Take a radiograph (pic) and confirm no open spaces between implant and transfer.
3. Select tray and confirm that screw can penetrate through impression tray and is visible.
4. Select impression tray and fill it with impression material as well as hand syringe, apply hand syringe material into wings of the transfer as well as placement of the impression tray onto proper position of dental arch.
5. After impression is set, unscrew impression transfer from implant and pull out impression tray.
6. Place and confirm that lab analog is fully engaged to impression transfer. (CAUTION: if lab analog is not engaged you will have an occlusal discrepancy as well as multi-unit discrepancy of open margin.)

